



ArtReach

***VISUAL ART
WORKSHOP***

TODAY'S PROJECT

A MIXED MEDIA SELF PORTRAIT INSPIRED BY THE ARTWORK OF ELLEN GALLAGHER

We will investigate the meaning of identity and how Ellen Gallagher utilizes identity in her work. We will also discuss appropriated imagery. After we talk about it, we will use what we find out to create our own artwork.

ArtReach





ELLEN GALLAGHER

● OUR FEATURED ARTIST

- She is an American artist and her mediums include painting, works on paper, film and video.
- Before her art career, Gallagher worked as a commercial fisherman in Alaska and Maine.
- Her most famous pieces are her grid-like collages of magazines grouped together into larger pieces.
- Each of these works contains as many as or more than 60 prints employing techniques of photogravure, spit-bite, collage, cutting, scratching, silkscreen, offset lithography and hand-building. Gallagher also glues notebook paper drawings onto her canvas to create textured surfaces.

ArtReach



OUR FOCUS ARTWORK

DELUXE

2004-2005, 60 mixed media collage pieces, 84 in. x 167 in.

ArtReach





ART VOCAB

WHAT WE WILL
TALK ABOUT

01

CONTRAST

The difference between elements in a composition. This can happen through a variety of elements such as value change, size difference, etc.

02

APPROPRIATION

Appropriation is when an artist creates a new work of art by taking preexisting images from other sources and modifies and/or incorporates those images with new ones.

03

IDENTITY

Identity is the qualities, beliefs, personality, looks and/or expressions that make a person or group. A psychological identity relates to self-image, self-esteem, and individuality.



CONTRAST

Ellen Gallagher uses unique materials that contrast with the appropriated imagery she finds in magazines and catalogs. Some of the elements are even more 3-D. This contrast draws attention to the work.

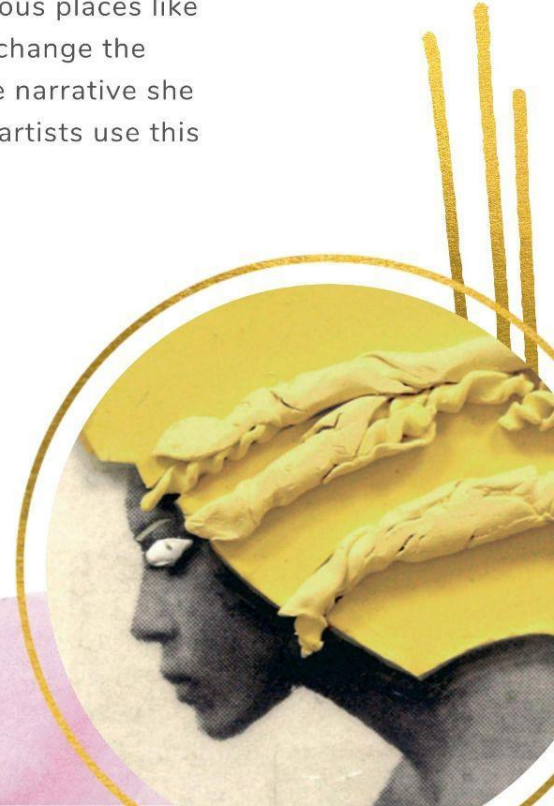


APPROPRIATION

Gallagher uses imagery that she finds in various places like magazines and catalogs. She adds layers to change the meaning and alters the imagery based on the narrative she is trying to tell. Imagery is all around us and artists use this imagery as a way to decode culture.

IDENTITY

There are many different identities that one can have and artists explore identity in their work. Ellen Gallagher uses imagery found in wig catalogs to explore her African American identity. In your artwork, think of how you want to represent yourself and what is important to you.

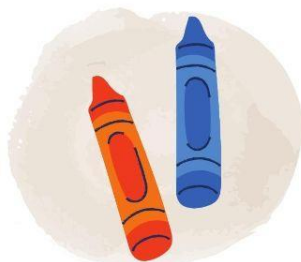


ART MATERIALS

WHAT WE'LL USE TODAY



CONSTRUCTION
PAPER



CRAYONS &
MARKERS



SCISSORS



GLUESTICK



WORKSHOP STEPS

ELLEN GALLAGHER SELF PORTRAITS



WHAT IS IMPORTANT TO YOU?

Consider what you love and value when thinking of how you want to add to your picture to tell a story.



CUT OUT SHAPES

Cut out shapes from construction paper to layer on your portrait. These can also be abstract shapes.



GLUE SHAPES TO PHOTO

Glue your shapes to your photo. Layering is key!



ADD DETAILS

Use your markers and crayons to add details to your work. Think about telling a story.

PROJECT VISUALS

THINK OF A STORY TO TELL

How do you want to represent yourself? You are the main character.

CUT OUT SHAPES & GLUE

Cut out shapes to add to your story. Glue them to the photo.

ADD DETAILS

Use markers and crayons to further tell your story.





VA:CR1.2.2A

Make art or design with various materials and tools to explore personal interests, questions, and curiosity.



VA:CR2.1.2A

Experiment with various materials and tools to explore personal interests in a work of art or design.



VA:CR3.1.3A

Elaborate visual information by adding details in an artwork to enhance emerging meaning.

VAPA STANDARDS